



**RICHMOND**  
**INTERNATIONAL AIRPORT**

# Aircraft Parking Request Procedures

- All Diversions (leased/non-leased space)
- Scheduled aircraft (non-leased space)

All inbound diversions must be reported to RIC Airport Operations whether they will be parking at a leased gate, non-leased gate, or hardstand parking spot. The information contained in Appendix E details current airline gate lease status and hardstand parking positions on various ramps.

Airport Operations numbers:

OFFICE (804) 226-8590

DUTY CELL (804) 221-6694

24/7 COMM (804) 226-0001



# APPENDIX E – Gate Lease Status and Hardstand Parking Information

## RIC LEASED GATES AND RON PARKING – EFFECTIVE 04/01/2022\*

1. Based on current configuration / gate analysis – subject to change

Gate Number	Leased to	Hours	Max. Wingspan <sup>1</sup>
A-1			85 ft. (E-175)
A-2	JetBlue	RON 19:00 - 07:00	85 ft. (E-175)
A-3			85 ft. (E-175)
A-4	JetBlue	Continuous	118 ft. (B-737, A-320)
A-5	Breeze	Per use	85 ft. (E-175)
A-6	American	Continuous	118 ft. (B-737, A-320)
A-8	American	Continuous	118 ft. (B-737, A-320)
A-10	American	Continuous	118 ft. (B-737, A-320)
A-11	American	RON 19:00 – 07:00 (until 5/4/22)	118 ft. (B-737, A-320)
A-12	American	Continuous	118 ft. (B-737, A-320)
A-13	Allegiant	Per use	118 ft. (B-737, A-320)
A-14	American	Continuous	118 ft. (B-737, A-320)
A-15			125 ft. (B-757)
A-16	American	RON 19:00 – 07:00 (effective 12/1/21)	200 ft. (B-777)
Gate Number	Leased to	Hours	Max. Wingspan <sup>1</sup>
B-1	United	Continuous	118 ft. (B-737, A-320)
B-2	United	RON 19:00 - 07:00	85 ft. (E-175)
B-3	United	Continuous	118 ft. (B-737, A-320)
B-4	United	Continuous	118 ft. (B-737, A-320)
B-5	Delta	RON 19:00 - 07:00 (effective 11/8/21)	118 ft. (B-737, A-320)
B-6	Delta	RON 19:00 - 07:00	118 ft. (B-737, A-320)
B-7	Spirit	Continuous	118 ft. (B-737, A-320)
B-9	Southwest	Continuous	118 ft. (B-737, A-320)
B-10	Delta	Continuous	118 ft. (B-737, A-320)
B-11	Delta	RON 19:00 - 07:00	125 ft. (B-757)
B-12	Delta	Continuous	118 ft. (B-737, A-320)
B-13	Delta	RON 19:00 - 07:00	118 ft. (B-737, A-320)
B-14	Delta	Continuous	125 ft. (B-757)
B-15	Delta	RON 19:00 - 07:00 (effective 9/14/21)	212 ft. (B-747)

## APPENDIX E

### AIR CARRIER RAMP PARKING - SEE FIGURE 1

SPOT	AIRCRAFT GROUP SIZE	SPECIAL NOTES
<b>D5</b>	Group III: 118 ft.	May accommodate two small regional jets parked nose to tail.

### CARGO RAMP PARKING – SEE FIGURE 2 & 3

SPOT	AIRCRAFT GROUP SIZE	SPECIAL NOTES
<b>C1</b>	<b>N/A</b>	<b>FEDEX GSE LEASE</b>
<b>C2</b>	<b>N/A</b>	<b>FEDEX GSE LEASE</b>
<b>C3</b>	<b>N/A</b>	<b>Pavement not suitable for aircraft operations.</b>
<b>C4</b>		<b>Size unknown due to ramp realignment</b>
<b>C5</b>	Group III: 118 ft.	<b>SUNCOUNTRY LEASE HOLD</b>
<b>C6</b>		<b>Size unknown due to ramp realignment</b>
<b>C7</b>		<b>Size unknown due to ramp realignment</b>
<b>C8</b>	Group IV: 171 ft.	<b>SUNCOUNTRY LEASE HOLD</b>
<b>C9</b>	Group IV: 171 ft.	<b>FEDEX LEASE HOLD</b>
<b>C10</b>	Group IV: 171 ft.	<b>FEDEX LEASE HOLD</b>
<b>C11</b>	Group III: 118 ft.	<b>FEDEX LEASE HOLD</b>
<b>C12</b>	Group IV: 171 ft.	<b>UPS LEASE HOLD</b>
<b>C13</b>	Group IV: 171 ft.	<b>UPS LEASE HOLD</b>
<b>C14</b>	Group IV: 171 ft.	<b>UPS LEASE HOLD</b>

**GREEN** highlights indicate possible use for irregular ops (check for conditions)

\*indicates May support larger aircraft if adjacent spots vacant

### EAST RAMP PARKING – SEE FIGURE 4

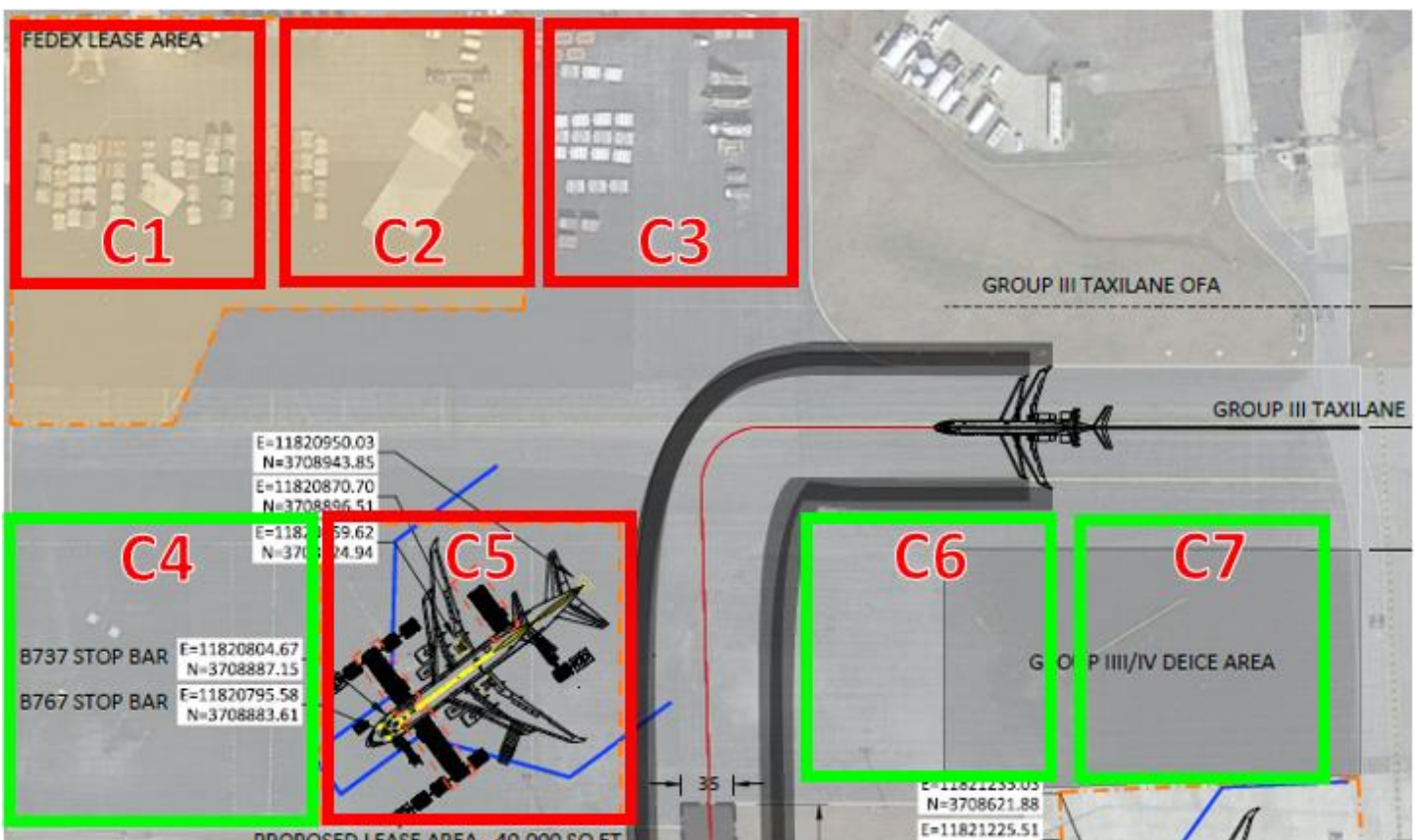
SPOT	AIRCRAFT GROUP SIZE	SPECIAL NOTES
<b>1</b>	Group IV: 171 ft.	<b>DHL LEASE HOLD</b>
	Group V: 214 ft.	<b>No markings on ramp</b>

APPENDIX E

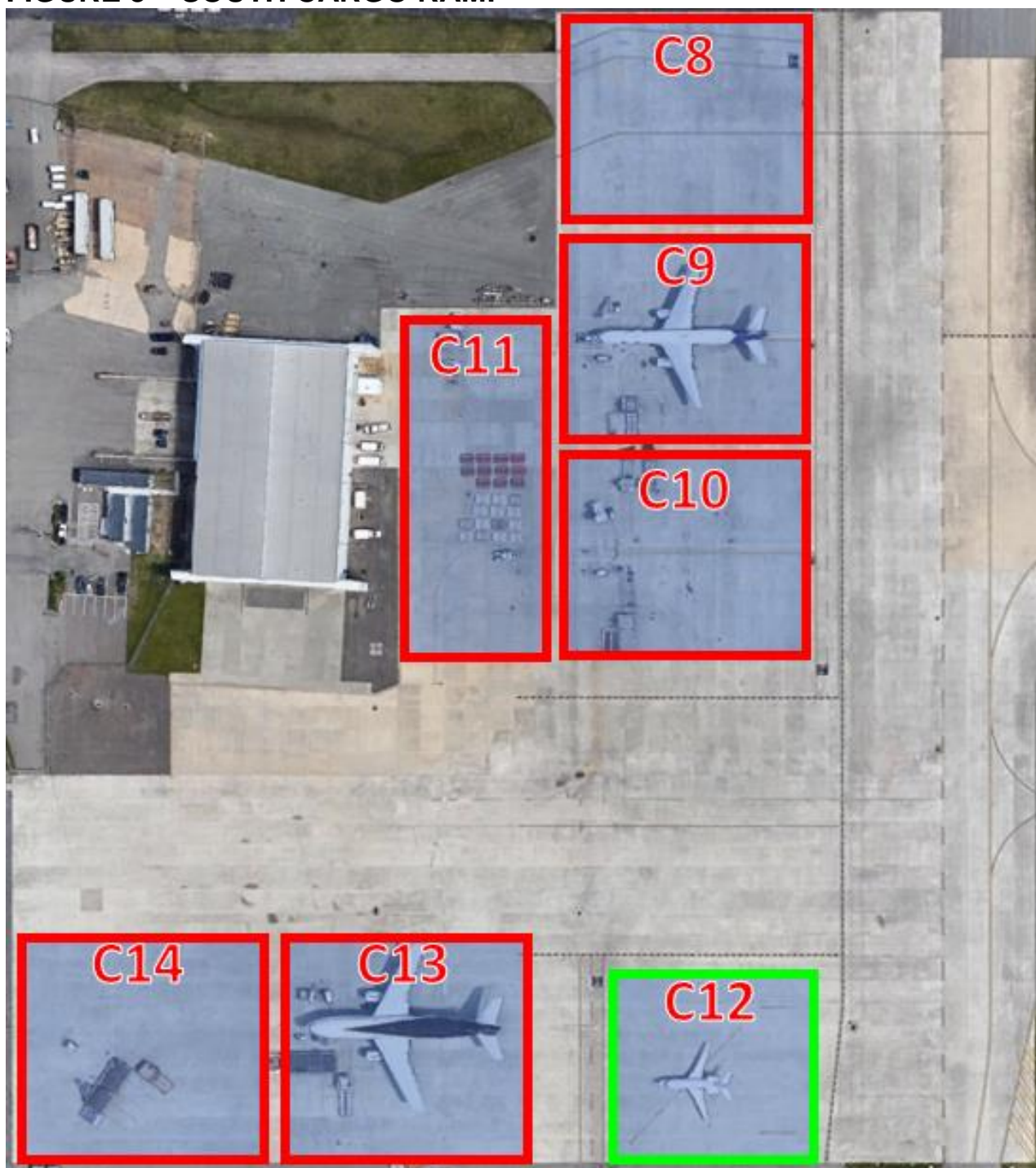
FIGURE 1 – NORTH AIR CARRIER RAMP



FIGURE 2 – NORTH CARGO RAMP



APPENDIX E  
FIGURE 3 – SOUTH CARGO RAMP





APPENDIX E  
FIGURE 4 – EAST RAMP #1



20086

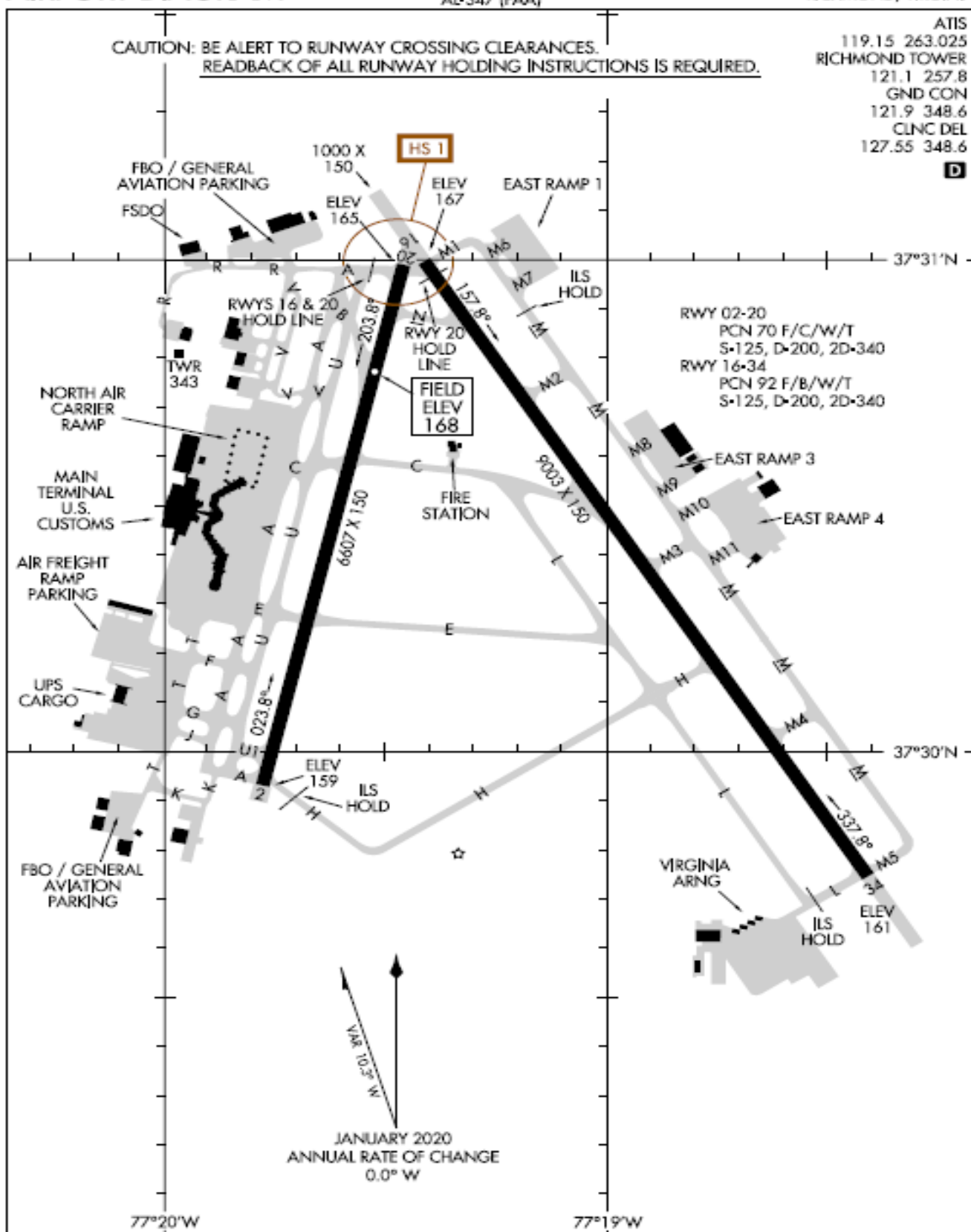
## AIRPORT DIAGRAM

AL-347 (FAA)

RICHMOND INTL (RIC)  
RICHMOND, VIRGINIACAUTION: BE ALERT TO RUNWAY CROSSING CLEARANCES.  
READBACK OF ALL RUNWAY HOLDING INSTRUCTIONS IS REQUIRED.

ATIS  
119.15 263.025  
RICHMOND TOWER  
121.1 257.8  
GND CON  
121.9 348.6  
CLNC DEL  
127.55 348.6

D



NE-3, 25 MAR 2021 to 22 APR 2021

NE-3, 25 MAR 2021 to 22 APR 2021

## AIRPORT DIAGRAM

20086

RICHMOND, VIRGINIA  
RICHMOND INTL (RIC)